

# LYRO.

EVOLUTION



# LYRO.

Our range of lighting fixtures, suitable for residential spaces, soft traffic and small roads.

---

Richelieu R<sup>2</sup>

---

Richelieu D<sup>2</sup>

---

D'Artagnan<sup>2</sup>

---

Aramis<sup>2</sup>

---

Porthos<sup>2</sup>

---

Athos<sup>2</sup>

---





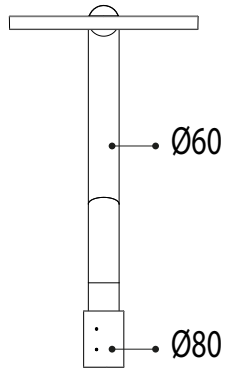
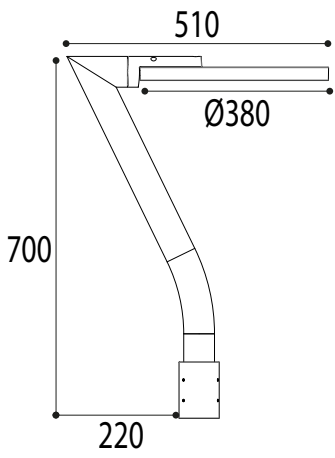
*Model with decorative veil option*

# RICHELIEU ROND<sup>2</sup>.

LUMINAIRE COMPOSED OF AN OPTICAL UNIT  
ON AN ECCENTRIC RISER,  
LIKE A **SPACE SIGNATURE**



## DIMENSIONS



# RICHELIEU ROND<sup>2</sup>.



Meets the requirements of French decree of December 27, 2018  
for the prevention, reduction and limitation of light pollution.



## MATERIALS AND FINISHINGS

Luminaire composed of:

- Extruded aluminum mounting arm  
Compatible for mast top 60
- Optical unit in die-cast aluminum with IK08 screen-printed glass bowl

Two-tone powder coating possible in any RAL, seaside option on request

## EQUIPMENT

- IP66 OPTICAL UNIT:
  - Class II luminaire
  - Equipment of 1 or 2 PCB (of 16 leds or 32 leds, or equivalent)
  - PMMA lenses
  - Optics: Cycle path (PCY)
  - Table of flows and efficiency identical to the Lolita luminaire, available on demand
  - Lifetime L90B10 100000h
  - ULR < 1%, ULR < 4% (in situ), CIE code flux 3 > 95%
  - Color temperature: 3000K as standard. 2700K, 2200K and 1800K optional
  - Coexistence of 2 tones of white / of a tone of white and a color for the preservation of a particular fauna possible on request
  - Standard length pre-wiring according to the total height of the mast and Richelieu 2 assembly

- DEPORTED EQUIPMENT at the foot of the mast:

- IP66 sealing
  - Fullprog driver as standard with integrated 8KV mini protection
- Optional liteprog and D4I driver

Volumetry compatible with mini Ø90 mm poles - Specific driver(s) for mixed source solution on project

- OPTIONS:

- Zhaga antenna socket
- Varistor

- All our components are ENEC class II certified

## STANDARD FIXING

- Covering end cap for 60mm top mast
- Others on request





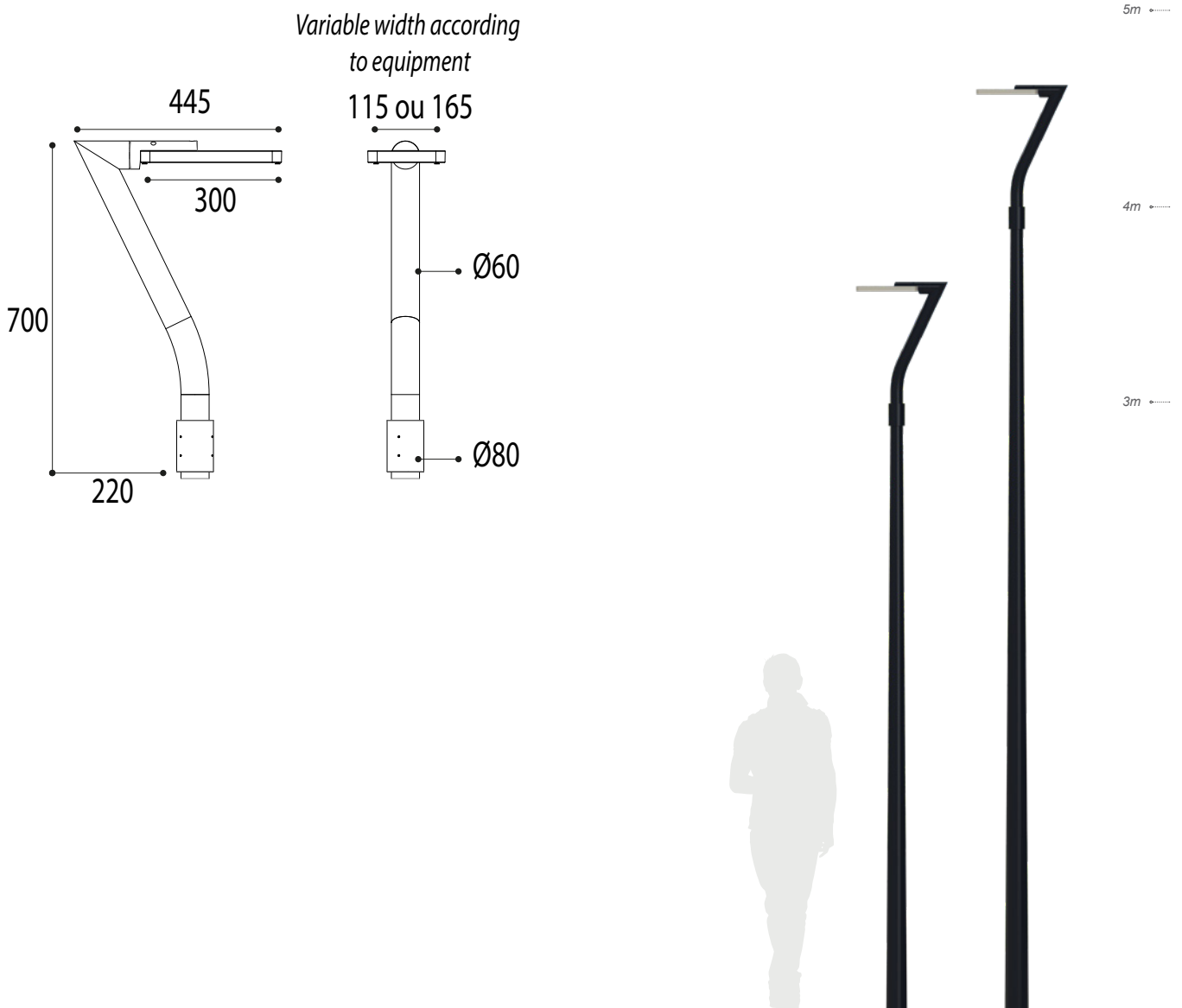


# RICHELIEU RECTANGLE<sup>2</sup>.



SHAPE VARIATION  
OF RICHELIEU LUMINAIRE, **RECTANGLE.**

## DIMENSIONS



# RICHELIEU RECTANGLE<sup>2</sup>.



Meets the requirements of French decree of December 27, 2018  
for the prevention, reduction and limitation of light pollution.



## MATERIALS ET FINISHINGS

Luminaire composed of:

- Extruded aluminum mounting arm  
Compatible for mast top 60
- Optical unit in die-cast aluminum with IK08 screen-printed glass bowl

Two-tone powder coating possible in any RAL, seaside option on request

## EQUIPMENT

- IP66 OPTICAL UNIT:
  - Class II luminaire
  - Equipment of 1 or 2 PCB (of 16 leds or 32 leds, or equivalent)
  - PMMA lenses
  - Optics: Cycle path (PCY)
  - Table of flows and efficiency identical to the Lolita luminaire, available on demand
  - Lifetime L90B10 100000h
  - ULR < 1%, ULR < 4% (in situ), CIE code flux 3 > 95%
  - Color temperature: 3000K as standard. 2700K, 2200K and 1800K optional
  - Coexistence of 2 tones of white / of a tone of white and a color for the preservation of a particular fauna possible on request
  - Standard length pre-wiring according to the total height of the mast and Richelieu 2 assembly
- DEPORTED EQUIPMENT at the foot of the mast:
  - IP66 sealing
  - Fullprog driver as standard with integrated 8KV mini protection  
Optional liteprog and D4I driver  
Volumetry compatible with mini Ø90 mm poles - Specific driver(s) for mixed source solution on project
- OPTIONS:
  - Zhaga antenna socket, varistor
- All our components are ENEC Class II certified

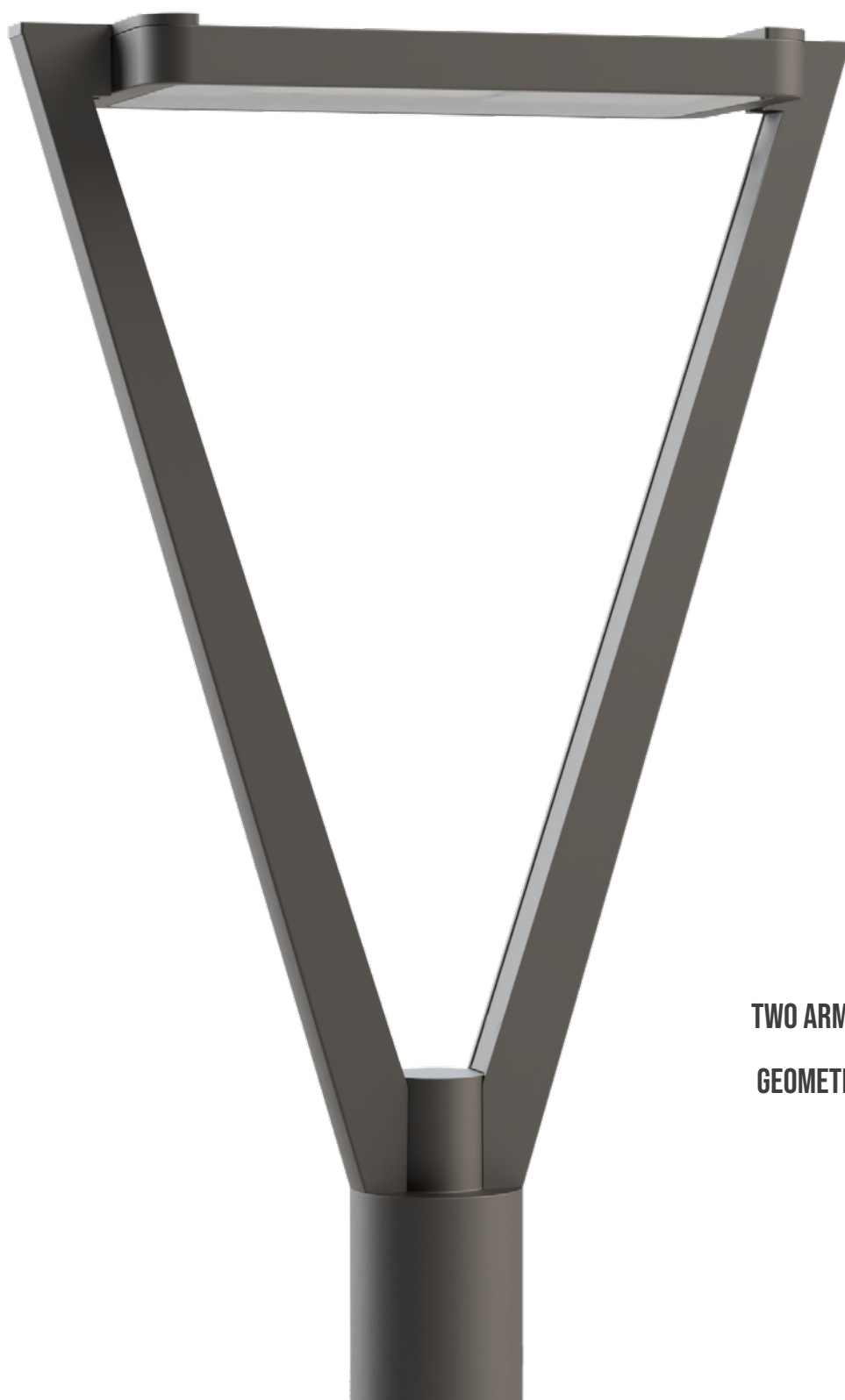
## STANDARD FIXING

- Covering end cap for 60mm top mast
- Others on request



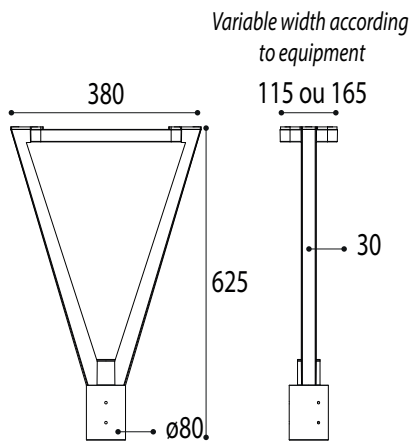


# D'ARTAGNAN<sup>2</sup>.



TWO ARMS LUMINAIRE ,  
GEOMETRICALLY **ASSERTIVE.**

## DIMENSIONS





✓ Meets the requirements of French decree of December 27, 2018  
for the prevention, reduction and limitation of light pollution.



## MATERIALS AND FINISHINGS

Luminaire composed of:

- Extruded aluminum mounting arm  
Compatible for mast top 60
  - Optical unit in die-cast aluminum with IK08 screen-printed glass bowl
- Two-tone powder coating possible in any RAL, seaside option on request

## EQUIPMENT

- IP66 OPTICAL UNIT:
  - Class II luminaire
  - Equipment of 1 or 2 PCB (of 16 leds or 32 leds, or equivalent)
  - PMMA lenses
  - Optics: Cycle path (PCY)
  - Table of flows and efficiency identical to the Lolita luminaire, available on demand
  - Lifetime L90B10 100000h
  - ULR < 1%, ULR < 4% (in situ), CIE code flux 3 > 95%
  - Color temperature: 3000K as standard. 2700K, 2200K and 1800K
  - Coexistence of 2 tones of white / of a tone of white and a color for the preservation of a particular fauna possible on request
  - Standard length pre-wiring according to the total height of the mast and D'Artagnan<sup>2</sup> assembly
- DEPORTED EQUIPMENT at the foot of the mast:
  - IP66 sealing
  - Fullprog driver as standard with integrated 8KV mini protection
  - Optional liteprog and D4I driver
  - Volumetry compatible with mini Ø90 mm poles - Specific driver(s) for mixed source solution on project
- OPTIONS:
  - Zhaga antenna socket, varistor
- All our components are ENEC Class II certified

## STANDARD FIXING

- Covering end cap for 60mm top mast
- Others on request



# ARAMIS<sup>2</sup>.

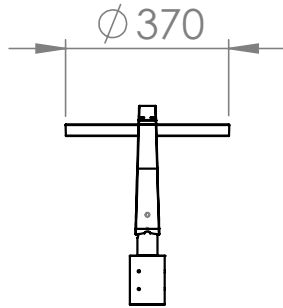
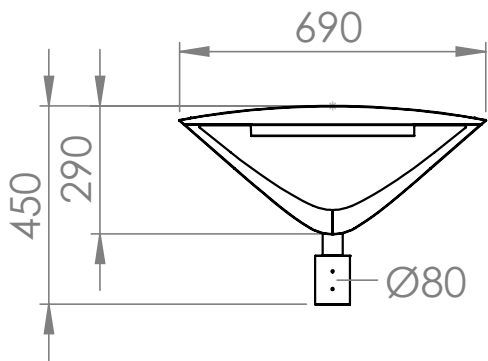
LUMINAIRE WITH SOFT LINES THAT SEEMS TO DEFY THE **EQUILIBRIUM**

GOES WELL WITH BOTH MODERN AND MORE TRADITIONAL ARCHITECTURES.





**DIMENSIONS**



*Height of the pole for proportions*

# TECHNICS ARAMIS<sup>2</sup>.

✓ Meets the requirements of French decree of December 27, 2018  
for the prevention, reduction and limitation of light pollution.



## MATERIALES AND FINISHINGS

Luminaire composed of:

- Extruded aluminum mounting arm  
Compatible for mast top 60
- Optical unit in die-cast aluminum with IK08 screen-printed glass bowl

Two-tone powder coating possible in any RAL, seaside option on request

## EQUIPMENT

- IP66 OPTICAL UNIT:
  - Class II luminaire
  - Equipment of 1 or 2 PCB (of 16 leds or 32 leds, or equivalent)
  - PMMA lenses
  - Optics: Cycle path (PCY)
  - Table of flows and efficiency identical to the Lolita luminaire, available on demand
  - Lifetime L90B10 100000h
  - ULR < 1%, ULR < 4% (in situ), CIE code flux 3 > 95%
  - Color temperature: 3000K as standard. 2700K, 2200K and 1800K
  - Coexistence of 2 tones of white / of a tone of white and a color for the preservation of a particular fauna possible on request
  - Standard length pre-wiring according to the total height of the mast and Aramis<sup>2</sup> assembly
- DEPORTED EQUIPMENT at the foot of the mast:
  - IP66 sealing
  - Fullprog driver as standard with integrated 8KV mini protection
  - Optional liteprog and D4I driver
  - Volumetry compatible with mini Ø90 mm poles - Specific driver(s) for mixed source solution on project
- OPTIONS:
  - Zhaga antenna socket, varistor
- All our components are ENEC Class II certified

## STANDARD FIXING

- Covering end cap for 60mm top mast
- Others on request







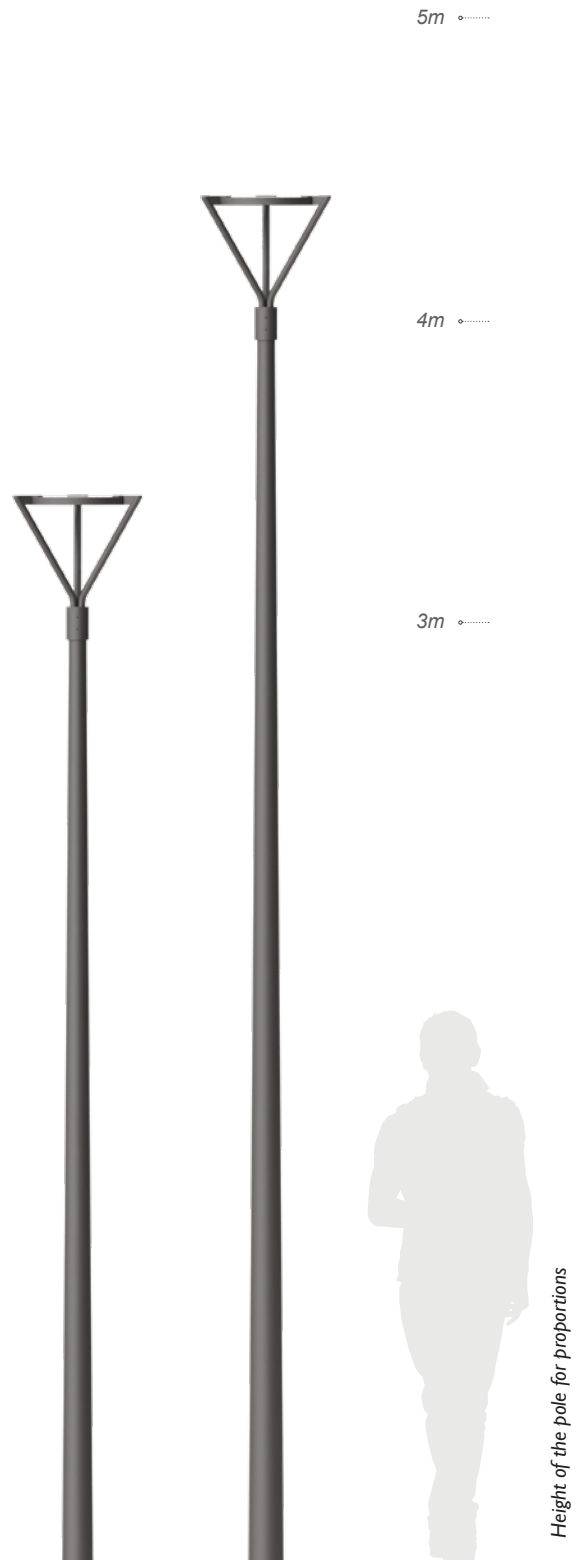
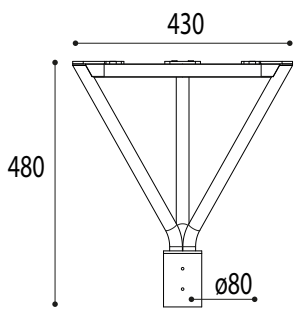
# PORTHOS<sup>2</sup>.



**TRANSPARENT** REWRITING,  
OF A CLASSIC TRIANGULAR LUMINAIRE.

---

## DIMENSIONS



# TECHNICS PORTHOS<sup>2</sup>.



Meets the requirements of French decree of December 27, 2018  
for the prevention, reduction and limitation of light pollution.



## MATERIALS AND FINISHINGS

Luminaire composed of:

- Extruded aluminum mounting arm  
Compatible for mast top 60
- Optical unit in die-cast aluminum with IK08 screen-printed glass bowl

Two-tone powder coating possible in any RAL, seaside option on request

## EQUIPMENT

### • IP66 OPTICAL UNIT:

- Class II luminaire
- Equipment of 1 or 2 PCB (of 16 leds or 32 leds, or equivalent)
- PMMA lenses
- Optics: Cycle path (PCY)
- Table of flows and efficiency identical to the Lolita luminaire, available on demand
- Lifetime L90B10 100000h
- ULR < 1%, ULR < 4% (in situ), CIE code flux 3 > 95%
- Color temperature: 3000K as standard. 2700K, 2200K and 1800K
- Coexistence of 2 tones of white / of a tone of white and a color for the preservation of a particular fauna possible on request
- Standard length pre-wiring according to the total height of the mast and Porthos<sup>2</sup> assembly

### • DEPORTED EQUIPMENT at the foot of the mast:

- IP66 sealing
  - Fullprog driver as standard with integrated 8KV mini protection
- Optional liteprog and D4I driver

Volumetry compatible with mini Ø90 mm poles - Specific driver(s) for mixed source solution on project

### • OPTIONS:

- Zhaga antenna socket, varistor
- All our components are ENEC Class II certified

## STANDARD FIXING

- Covering end cap for 60mm top mast
- Others on request





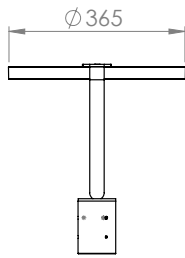
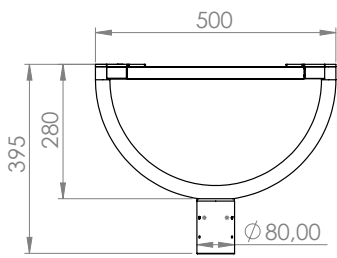
# ATHOS<sup>2</sup>.

LUMINAIRE **HALF-MOON** LIKE IN WEIGHTLESSNESS,  
FOR A SMOOTH URBAN INTEGRATION.



Luminaire top-mounted on Ø76mm pole

## DIMENSIONS



Height of the pole for proportions with  $\varnothing 76\text{mm}$  top

✓ Meets the requirements of French decree of December 27, 2018  
for the prevention, reduction and limitation of light pollution.



## MATERIALS AND FINISHINGS

Luminaire composed of:

- Extruded aluminum mounting arm
    - Compatible for mast top 60
  - Optical unit in die-cast aluminum with IK08 screen-printed glass bowl
- Two-tone powder coating possible in any RAL, seaside option on request

## EQUIPMENT

- IP66 OPTICAL UNIT:
  - Class II luminaire
  - Equipment of 1 or 2 PCB (of 16 leds or 32 leds, or equivalent)
  - PMMA lenses
  - Optics: Cycle path (PCY)
  - Table of flows and efficiency identical to the Lolita luminaire, available on demand
  - Lifetime L90B10 100000h
  - ULR < 1%, ULR < 4% (in situ), CIE code flux 3 > 95%
  - Color temperature: 3000K as standard. 2700K, 2200K and 1800K
  - Coexistence of 2 tones of white / of a tone of white and a color for the preservation of a particular fauna possible on request
  - Standard length pre-wiring according to the total height of the mast and Athos<sup>2</sup> assembly
- DEPORTED EQUIPMENT at the foot of the mast:
  - IP66 sealing
  - Fullprog driver as standard with integrated 8KV mini protection
  - Optional liteprog and D4I driver
  - Volumetry compatible with mini Ø90 mm poles - Specific driver(s) for mixed source solution on project
- OPTIONS:
  - Zhaga antenna socket, varistor
- All our components are ENEC Class II certified

## STANDARD FIXING

- Covering end cap for 60mm top mast
- Others on request

# SHADES.

COORDONNATE MANY SHADES WITH **HARMONY**  
 MIX AND MATCH THEM TO GET A **SPACE BALANCE**  
 THANKS TO OUR SELECTION OF AXALTA COLORES,  
 IN MATTE OR POWDERY TEXTURES.



COBALT BLUE  
AE03055501320



SIGNAL BLUE  
AE03055500520



CAPRI BLUE  
AE03055501920



SKY BLUE  
AE03055501520



LIGHT BLUE  
AE03055501220



PASTEL BLUE  
AE03055502420



MINT TURQUOISE  
AE03056603320



EMERALD GREEN  
AE03056600120



MINT GREEN  
AE03056602920



RAPE YELLOW  
AE03051102120



SIGNAL YELLOW  
AE03051100320



MELON YELLOW  
AE03051102820



PURE ORANGE  
AE03052200420



TRAFFIC RED  
AE03053302020



RUBY RED  
AE03053300320



LIGHT IVORY  
AE03051101520



CREAM  
AE03059900120



IVORY  
AE03051101420



LIGHT  
BRONZE C32  
SD201C1164121



BRONZE  
SD201C8000320



MEDIUM BRONZE  
C33  
SD201C8210521



GOLD  
SD201C1000820



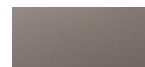
LOTUS  
SD201C8214620



SIENNA  
SD201C8214820



MINK 7048  
SD201C7704820



NIMBUS 9022  
SD201C7902220



STERLING  
SD201C7357220



BROWN  
SD201C8000420



DARK  
BRONZE C34  
SD201C8210621







168 rue de la fonderie • Zone de Pompey Industries  
54670 Custines • France • Tel. +33 (0)3 83 49 63 63 • e-mail : [contact@chrysaliseclairage.com](mailto:contact@chrysaliseclairage.com) •  
[www.chrysaliseclairage.com](http://www.chrysaliseclairage.com)

Chrysalis reserves the right to change its designs and models at any time.